

SHOTSPOTTER CONNECT™

Maximize Limited Patrol & Analyst Resources for Highest Impact

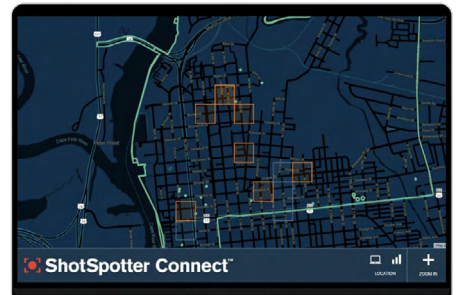
Automate Directed Patrol Planning to Better Serve Communities

The Challenge for Law Enforcement

Across the United States, agencies are being pushed to their limit in the wake of understaffing and high crime levels. Given this combination of circumstances, it's more important than ever before that patrol, task force, and crime analyst resources are used efficiently. But many agencies are currently spending far too much time and effort manually producing hotspot analysis reports to direct officers where to go, which can result in quickly outdated and low-impact patrol plans with unintentional under- and over-policing, and little visibility into officer activity. This can erode community goodwill and leave departments more vulnerable to criticism.

Provide Greater Community Impact with Fewer Resources





ShotSpotter Connect is a patrol and analyst tool that automates the planning of directed patrols for all Part 1 crimes across an entire jurisdiction, daily. With Connect, analysts and supervisors review pre-generated directed patrol assignments that ensure officers are at the right place at the right time to maximize crime prevention while also guarding against under- and over-policing.



SHOTSPOTTER CONNECT BENEFITS

Save Time and Increase Precision and Impact with Automated Patrol Plans

ShotSpotter Connect's automated directed patrols:

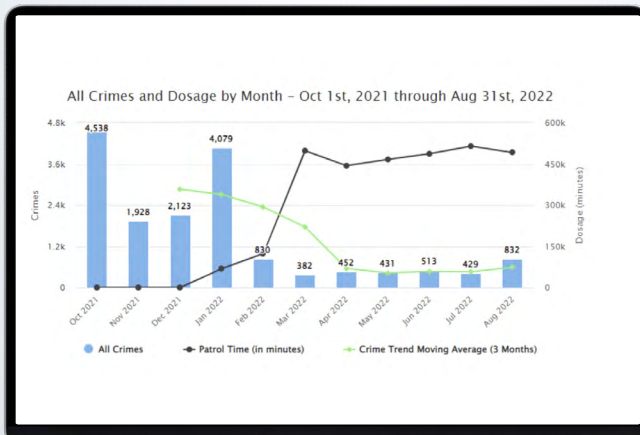
-  Are precise and produced daily, by shift and beat, across the jurisdiction
-  Reduce time spent conducting manual analysis each week, by as much as 80%
-  Gain comprehensive insight into how patrol officers are spending time on shifts and continuously evolve best practices
-  Direct officers to where they are needed most, reducing patrol gaps while building community trust and confidence

“ *ShotSpotter Connect has to be one of the biggest bang-for-the-buck policing tools around. It makes our patrol and analyst operations more impactful across the whole jurisdiction at a time when it's a challenge to protect and serve due to staffing shortages.* ”

Assistant Chief DAN SKIBINS, South Bend Police Department

Gain Visibility into Patrol Activities for Better Management and Increased Accountability

With Connect, line-level supervisors and command staff can gain comprehensive insight into how patrol officers are spending time on shifts, easily assess officer compliance, continuously evolve best practices based on a data-driven approach, and report on patrolling metrics with greater accuracy and transparency.



The **Shift Report** shows where officers were and what they were doing over time.



The **Tactic Report** measures and evaluates what tactics officers are using to deter crime.



The **Officer Report** shows how time was spent on each tactic to hold officers accountable.



The **Crime Type Report** displays average minutes spent on directed patrols by officers for each crime type.



The **Crime and Dosage Report** illustrates how directed patrols are impacting crime over time.

Reduce Patrol Gaps and Improve Community Relations

With Connect, agencies are better able to direct officers to where they are needed most, ultimately reducing patrol gaps while building community trust and confidence. Promoting a community-first approach, Connect has three protections in place to help establish impartiality when determining where patrols are conducted. First, the system intelligently meters out where patrol assignments occur and limits their duration to reduce instances of over-policing. Second, the system uses objective, non-crime data and purpose-built mechanisms to mitigate potential bias. Third, the system does not use any personally identifiable information to determine where patrols should be assigned.



**Intelligent
Patrol Metering**



**Use Objective,
Non-Crime Data**



**No Personally
Identifiable Info**